



## Control 16

SMART CONTROL.  
DESIGNED TO  
DELIVER.



All-in-one package comprising KNX server, IP router, smart home app and indoor intercom station



15.6" Full HD touch display



Customizable front glass



Surface or flush mounting, also flush-mounted

### Powerful features

The Control 16 clearly displays all building control functions in a central location on an 15.6 inch screen. This means you can always keep an eye on your building technology and simultaneously choose from many application options, as the Control 16 is based on a fully-fledged Windows IoT Enterprise LTSC computer.

You can use it in both private and commercial sectors - either with an external server or without, thanks to its own KNX interface and the YOUVI software that comes included. The full HD display with capacitive touchscreen, the HD webcam and the broadband speakers extend the device's range of applications, for example for video telephony or for use as an information terminal.

In addition to the basic building control features, the Control 16 also supports IP telephony, SIP intercom systems with video transmission and other Windows features such as night mode and swipe gesture control.

Thanks to the proprietary hardware and advanced cooling concept, the panel offers excellent performance and efficient cooling with silent operation.

### Smart software

The YOUVI Basic visualisation software is already included in the Control 16's scope of supply. With this software, you can control (RGBW) light, blinds, temperature or ventilation con-

veniently and centrally - simply via your customizable dashboard on the touch panel or via app. Thanks to the intuitive interface, all functions are easily accessible and you hardly need to navigate. You can also access any websites via YOUVI and integrate them into the user interface. A special widget also allows you to keep an eye on all the energy flows in your home. This means you always know what is currently being consumed in the house, how much electricity the solar system is generating and how much energy is required from the power grid. YOUVI Basic can be expanded as required with various add-ons. The logic module makes many manual operations superfluous. You can save morning and evening routines and run them automatically. Other add-ons allow you to use additional functions: From video surveillance with IP cameras and door communication to controlling your smart home by voice command or with the app while on the go.

With the music player for Sonos or trivum, multi-room control is realised, turning the Control 16 into a comprehensive multimedia device. With manufacturer bridges such as Netatmo or Philips Hue, you can create your own personal feel-good atmosphere.

### Open for other visualisations

In addition, other visualisations that run

as a web application or Windows client on the Control 16 can easily be used. A large selection is available here, such as Cube-Vision, Edomi or visualisations of the Gira HomeServer or X1, allowing you to expand the functions of the panel according to your individual requirements.

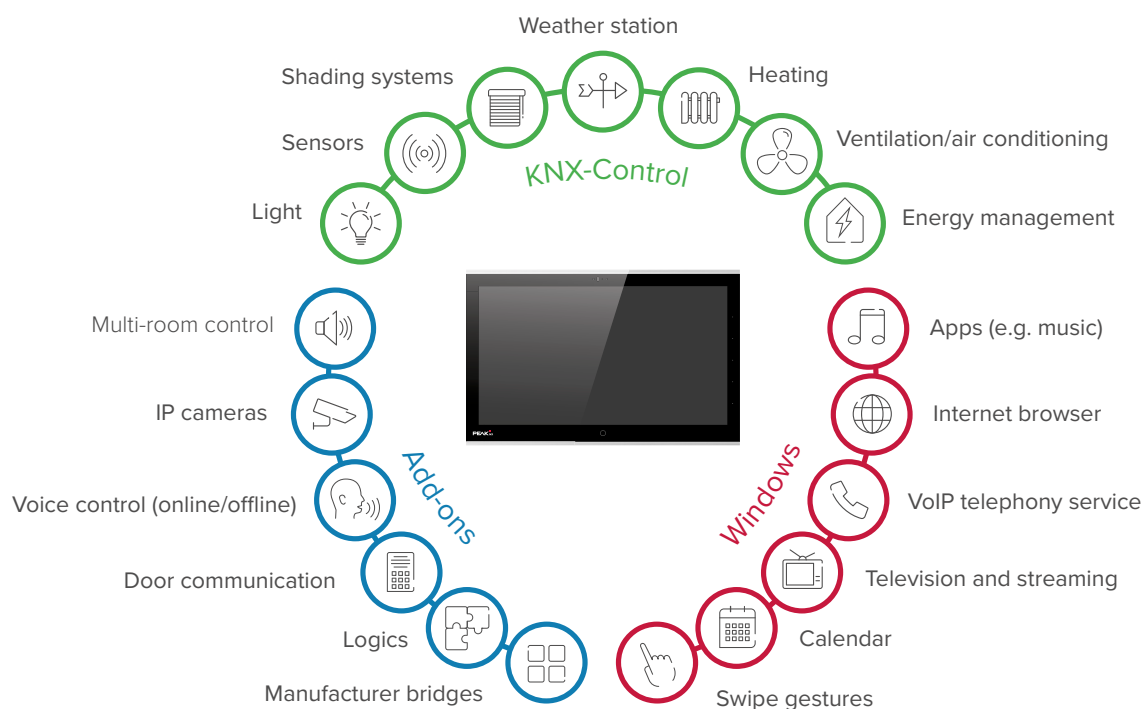
### Convenient assembly

You have three different options to mount the Control 16: Surface-mounted without chiselling or chipping, concealed installation for a very flat look on the wall or even flush-mounted. Flush mounting gives the panel a particularly elegant appearance.

It can also be installed as a replacement device in the mounting boxes of Gira, ABB/Busch-Jaeger, Berker, Jung and Merten or Feller devices. With surface mounting, old MT701 devices with a flush-mounted KAST2 box can also be easily replaced.

### Timeless design

The Control 16's glass is available in black and white as standard, but you also have the option of designing a custom glass in your preferred colour or with your own motif. All these glass variants are also available without our logo. The frame colour is can also be selected.





A visualisation where even new users can find their way around quickly and intuitively. The smart-design interface shows you everything you need for uncomplicated building control.

Take advantage of the clear navigation bar, which is divided into trades, floors and a custom dashboard.

In addition to controlling roller shutters, blinds, (RGBW) dimmers, lights, switches and heaters, you can also easily integrate the weather station.

A very wide variety of sensors are supported, e.g., for brightness, humidity and wind speed, as well as binary sensors for window and door contacts.

Use the room buttons to go directly to your desired room and control groups of lights, shutters and more without having to navigate a lot.

Always keep an overview with integrated streams from your surveillance cameras.

Ventilation systems are clearly presented and make it easier to control your indoor air quality.

Each tile can be displayed in two different sizes.

Always have a live view of how much energy is being consumed or recovered.



Automatic set-up via ETS import function



Light or dark design



Dashboard freely editable via drag-and-drop



#### Smart side buttons

The Control 16 features five flush-integrated side buttons (direct selection keys) on the right-hand side. These can be individually assigned to devices or http commands. In combination with the YOUVI visualisation, various logic functions can also be configured.

# THE YOUVI ADD-ON PRINCIPLE

With the YOUVI add-ons, we offer you exactly the features you need. YOUVI Basic covers the most common building control tasks. The additional add-ons make it possible to expand the functionality as required. This gives you a building control system that is precisely tailored to you. The add-ons only need to be purchased once per building setup.



## Visualisation

For clear control of lights, dimmers, RGB(W) luminaires, shading, heating, sockets and ventilation systems. Available in English, French and German.



## Bus monitor

For quick troubleshooting on the KNX bus.



## IP router

To connect the KNX network without extra hardware.



## Connect module

For control via voice command (online or offline) or with the YOUVI app on the go.

Optional



## Camera module

To connect surveillance cameras.

Optional



## Logic module

For easily creating if-then routines.

Optional



## Door station module

For simple video door communication in the best sound quality.

Optional



## Device bridges

For integrating devices outside the KNX standard.  
For information on manufacturers, visit [peaknx.com/youvi](https://peaknx.com/youvi)

Optional

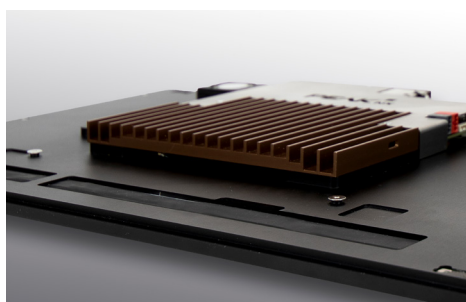
YOUVI BASIC

ADD-ONS



You can also control your home with the YOUVI mobile app. This is available free of charge for Android and iOS smartphones and for use in your own home network. The app is also available in a light and dark design.





# AT A GLANCE

## Technical data

### Features

- Intel Dual-Core, 11th generation
- 8 GB RAM
- SSD hard disk with 256 GB
- 15.6 inch Full-HD LED LCD with multi-touch
- 5-megapixel webcam
- Integrated stereo speakers and microphone
- Automatic brightness adjustment
- Automatic screen activation via proximity sensor
- Wi-Fi 2.4 GHz, 5 GHz and Bluetooth 5.2
- Fanless cooling by convection

### Software

- Operating system: Windows IoT Enterprise LTSC
- YOUVI Basic software package consisting of visualisation, IP router and bus monitor (modules and bridges can be purchased additionally)

### Connections

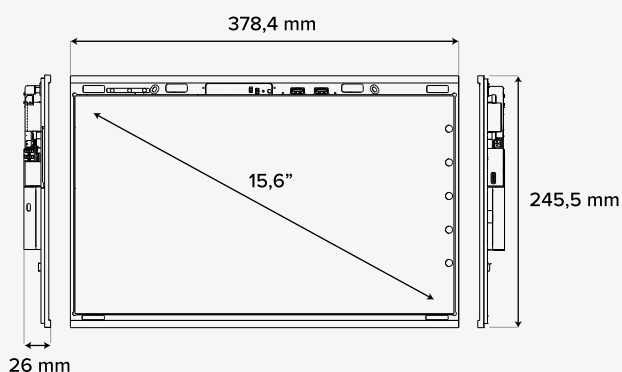
- 1 x KNX
- 2 x USB A 2.0 front connection
- 1 x USB C 3.2 Gen2
- 1 Gigabit Ethernet
- Supply terminals: 24 V DC, GND

### Power supply and consumption

- Supply voltage: 24 V DC, 2.4 A (power supply for mounting socket and DIN rail available)
- Idle mode: 6 W
- Operation at full capacity: 40 W
- Server operation without LCD: 4 W

### Dimensions

- Control 16, W x H x D: 378.4 x 245.5 x 26 mm
- Flush-mounted box, W x H x D: 251 x 193 x 50 mm
- Front glass, W x H x D: 378.4 x 231.1 x 1.5 mm
- Weight: 2.15 kg
- Weight front glass: 0.35 kg



## Compatibility

### Visualisations

All Windows or web-based, e.g:

- BabTechnology: CubeVision
- Gira: QuadClient, Ajax, X1
- Hager: Domovea
- Symcon GmbH: IP-Symcon
- Edomi, openHAB, ThinKnx, Loxone and many more...

### Mounting boxes

Adapter available for mounting boxes, such as UP-KAST2, Jung EBG 24 or Busch-Jaeger 6136/UP, for replacing e.g:

- Gira Control 9 & InfoTerminal Touch
- Merten Touch-Panel 7
- Busch ComfortPanel 9" & 12,1"
- Berker Master Control and many more...

### Cameras

IP streams in RTSP, JPG and MJPG format, e.g. from:

- Hikvision
- Axis
- Lupus
- Mobotix and many more...

### Door communication

All SIP-enabled telecommunications systems, e.g:

- Doorbird IP video door station
- AGFEO IP video TFE
- Wantec Monolith C IP
- Mobotix T25 and many more...

### ETS

- ETS Inside Server

### Music software

Windows or web-based software:

- Apple iTunes, Spotify, Sonos and many more...

- Reliable, silent operation
- Including YOUVI Basic software package for KNX bus control, consisting of visualisation, IP router and bus monitor
- No need for an external server thanks to KNX connection and software
- Compatible with many other visualisations, SIP door stations and mounting boxes
- Hassle-free, smooth display of surveillance cameras
- Low installation depth
- Available as a surface-mounted, concealed and flush-mounted version
- Interchangeable glass covers with customised designs